

# Flying Faders



# Neve



## Flying Faders

The Neve Flying Faders Console Automation system represents the most sophisticated Console automation technology currently available to the Recording, Post Production and Broadcast Industries.

Designed in co-operation with Martinsound Technologies, Flying Faders automation offers the advantages of moving fader automation, unparalleled facilities, and a user friendly interface that in its simplest form can bring automation to the Engineer by the press of a single button.

## The Fader

Faders are available in either mono or stereo versions, and are based on a P & G conductive plastic track. Coupled to the fader is a high torque servo controlled motor and drive assembly, designed to work with extreme accuracy at high speeds, year in, year out.

## Unparalleled Accuracy

The Flying Faders scale is divided into 4,096 digital steps for essentially perfect analogue to digital and digital to analogue conversion of your most subtle moves. All levels are stored to 1/10th dB accuracy, anywhere along the scale, providing unsurpassed precision of recording and playback for all fader moves.

## Sonic Quality

Since the audio is controlled directly, there are no VCA's to cause distortion. When coupled to a V series console, the combination of Flying Faders Automation linked with Neve audio technology offers the user



unsurpassed quality of signal path from microphone input to desk output.

## Channel Mutes

The Flying Faders mute function uses an opto-isolator, guaranteeing silent operation no matter how quiet the track or how many channels are muted simultaneously.

Mutes record and playback to 1/4 frame accuracy and can be easily created or modified either at the channel itself or "offline" via the V.D.U. interface.

In addition, on V series consoles the Channel Mute, Monitor Mute, E/Q in and insert switches can be directly interfaced to Flying Faders and automated in a similar manner to Mutes.

## The Mix Memory

All mixes are automatically saved and numbered, and are available from the 'scratch' memory at any time during the session. For permanent storage, any mix can be saved to either a standard 3.5" floppy disk for easy

transportability to other Flying Faders studios or onto the in-built 40mB hard disk.

The mix memory is virtually limitless, and the processor can handle any number of faders moving simultaneously at any combination of speeds for almost any length of time.

## Fader TRIM

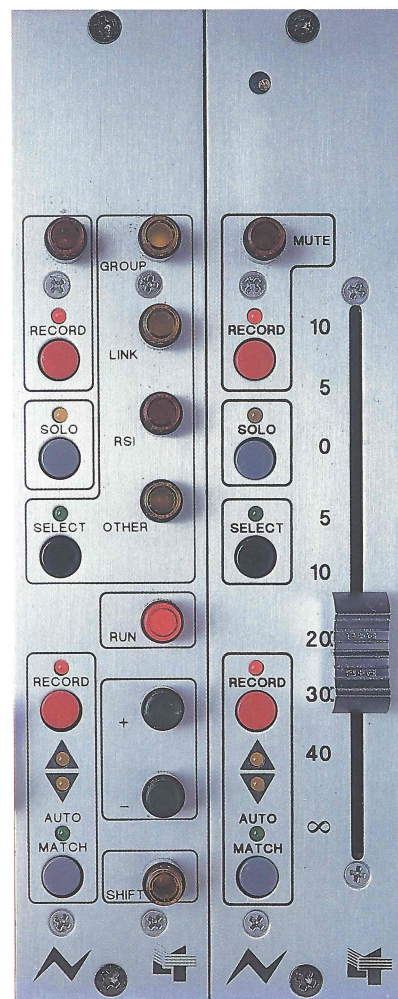
The Flying Faders TRIM mode enables the operator to adjust the gain structure of any selected number of channels either during a mix (so that the result can be heard in real time) or off-line without disturbing the dynamics of the underlying mix. TRIM can even be set to operate between pre-set time code points.

## Links and Groups

Flying Faders offers two independent methods of grouping faders together:

- as LINKS (move any fader in the group and the rest will follow)
- as VCA-Style GROUPS (the slave faders can be moved independently of the master)

Any fader can be designated as a GROUP MASTER, and slaves can be masters for sub-groups, giving a superbly flexible system for controlling large mixes, with MUTES included in both LINKS and GROUPS.



Separate GROUP MASTER faders may be fitted if required.



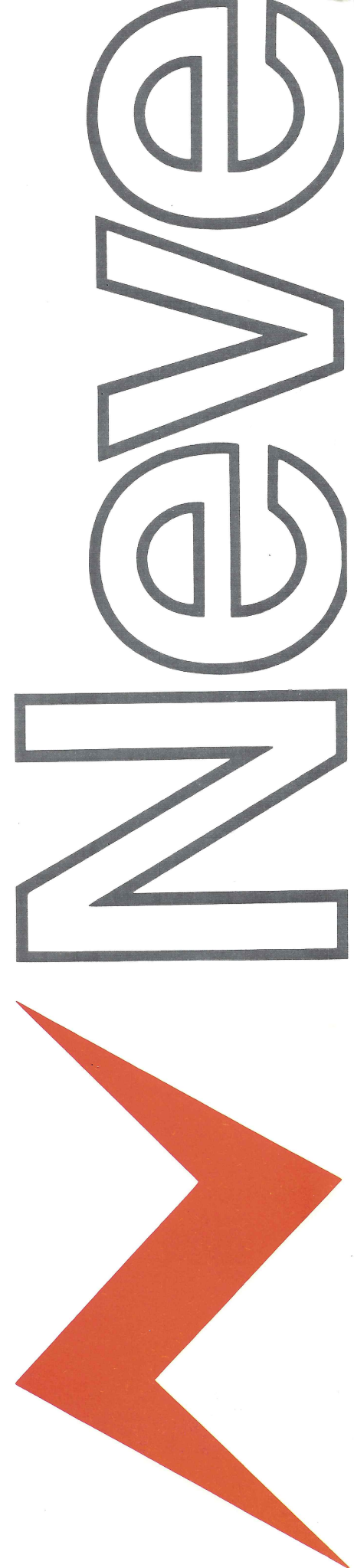
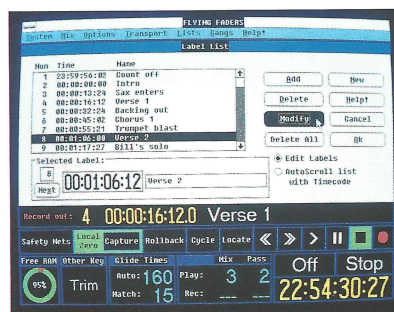
## User Interface

All the basic modes of automation for faders, Mutes and Channel Events can be selected either locally at each fader or across the console using the Global Master module. In addition, Flying Faders has an extremely sophisticated user interface accessed either by keyboard or mouse/trackball; the VDU display uses Microsoft™ windows which display all required function commands simultaneously, eliminating the need to remember complicated sequences.

Functions available via the user interface include:

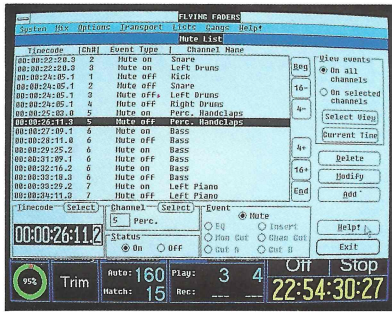
### Labels

Up to 99 labels or cue points can be entered. Labels may be edited against time-code, named and numbered.



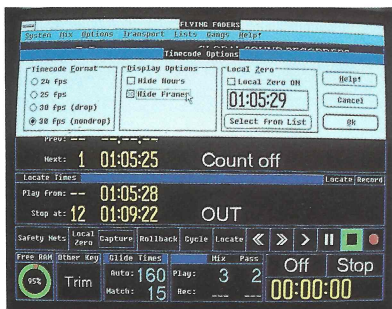
## Mute/Channel Button / A/B Cut Lists

For off-line entry and modification of events.



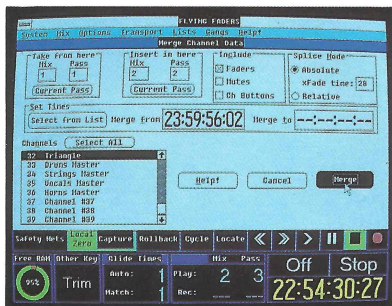
## Time Code Options

For selecting time code rate, and for selecting "Local Zero".



## Merge

This enables the operator to merge sections from various mixes together and can include all or any number of preselected Faders/Mutes.



## Copy

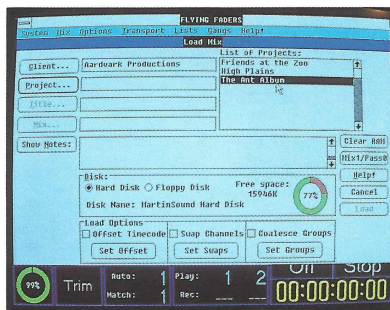
This allows channel/mute moves to be copied to other channels with or without an offset in time or for a channel's data to be repeated at a later or earlier time.

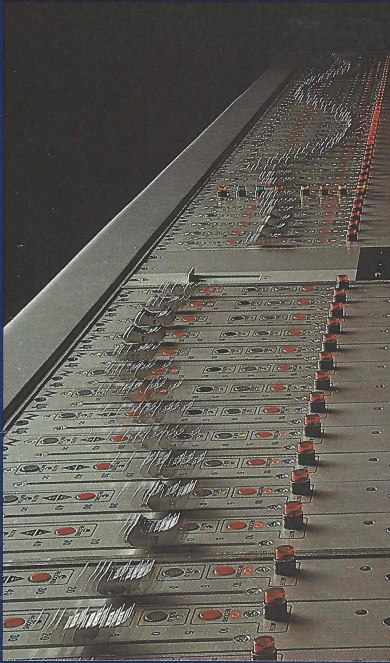
## Erase

All channel/mute/event data information can be erased selectively between T/C points.

## Keep/Load/Delete Mix Menus

These menus control the keeping and loading of RAM mixes to hard or floppy disc and the deletion of mixes by hierarchy (Client/Project/Title/Mix).





#### **Computer**

80286 and 68000 microprocessors  
2 Megabytes RAM  
40 Megabyte Harddisk  
3.5 inch high-density floppy drive  
Fibre optic communications

#### **VDU**

High resolution (VGA) colour monitor supplied  
RGB outputs for external monitor provided

#### **Mono Fader**

P&G conductive plastic audio track  
Opto-isolated series-shunt mute circuit  
Optional buffer boards for NEVE 51, 81 and V Series consoles  
Speed: Typical top to bottom of scale - 100 ms  
Fader top plates sized to most popular consoles are available

#### **Stereo Fader**

A stereo fader is optionally available

#### **Power**

110 - 125 Volts, 60 Hz or 220 - 240, 50 Hz

**Neve Electronics International** A Siemens Company  
Cambridge House, Melbourn, Royston, Herts. SG8 6AU  
Tel: 0763 260776 Fax: 0763 261886 Tlx: 81381

#### **Rupert Neve Inc**

Berkshire Industrial Park, Bethel, Connecticut 06801, USA  
Tel: (203) 744 6230 Fax: (203) 792 7863 Tlx: 969638

#### **Rupert Neve Inc** New York

Tel: (212) 956 6464 Fax: (212) 262 0848

#### **Rupert Neve Inc** Hollywood

Tel: (213) 461 6383 Fax: (213) 461 1620

#### **Rupert Neve Inc** Nashville

Tel: (615) 329 9584 Fax: (615) 329 1473

#### **Siemens AG** Österreich

Göllnergasse 15, Postfach 326, A-1031 Wien, Austria  
Tel: 431 71711-0 Fax: 431 71711-6510 Tlx: 137235